

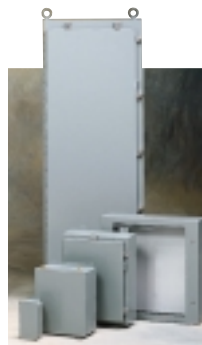
Building the right enclosures for a wide variety of applications is what we do best. We've created standard, modified, and custom-built enclosures for thousands of customers across a diverse range of industries. From the clean-room to the factory floor, Hoffman enclosures protect sensitive equipment from dust, dirt, oil, water, corrosion and other contaminants.

Specifying the right enclosure depends on a number of variables. Size, mounting, environment, material and accessories all play significant roles in determining performance and must be considered carefully. Here and on the following page, we highlight critical issues and ask some key questions that will help you choose the best enclosure for your application.

For additional information about specifying the right enclosure to meet your requirements, contact our Customer Support Group (see page ii).

Size

You'll need to consider several factors when specifying enclosure size. Hoffman provides a range of sizes, from simple junction boxes to suites of ganged enclosures.



What equipment will you enclose? The size and type of equipment you need to accommodate will determine the total panel space of your enclosure.

Where on the enclosure will equipment be installed? The placement of equipment creates further specification choices.

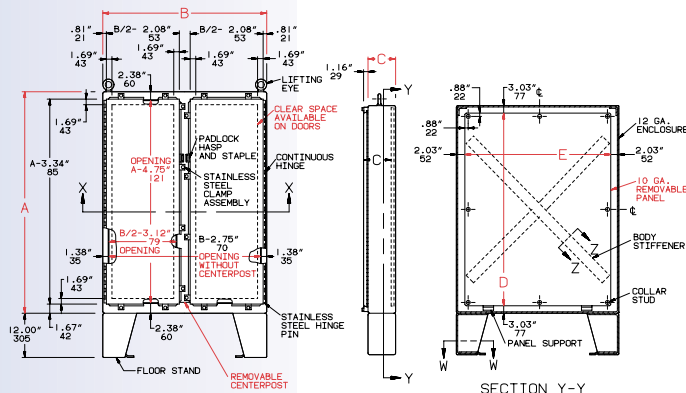
- **For subpanel mounted equipment,** start by selecting the subpanel size that best suits your equipment layout. Then match the subpanel with the appropriate enclosure choice.



- **For door-mounted controls,** choose an enclosure based on the "clear space" and door opening necessary for equipment mounting and convenient access. Our CAD views, like the one illustrated below, frequently include detailed information on these measurements.

Does your application have specific enclosure location requirements?

When selecting an enclosure for a predetermined floorplan, select an enclosure based on its external dimensions, and style. Then consider available internal mounting features.



Mounting

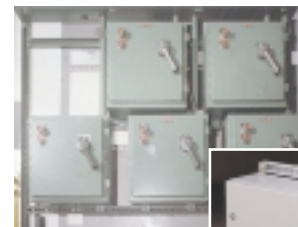
An appropriate mounting system makes protected equipment accessible to users, ensures equipment integrity, and maintains operator safety. Considering how equipment will be accessed and operated—including range of motion, ergonomics and frequency of use—will help determine the best choice. Hoffman mounting options include:



Pedestals ▶



Pendant arm systems



Wall-mount



Pole-mount ▶



Free-standing and floor-mount

Environment

Whatever your application—offshore, telecommunications, or dairy processing, environment is perhaps the most important factor to consider.

What is your primary environmental concern?

Consider the most important potential threat in your environment. This will determine which enclosure offers the best protection.



Common hazards include:

- Exposure to harsh weather, salt water and UV light
- Indoor exposure to water, oil, dust and dirt
- Exposure to corrosive chemicals
- Electromagnetic and radio frequency interference (EMI/RFI)
- Shock, vibration, impact or scratching

What type of equipment are you protecting?

Different types of equipment require different levels of environmental protection. For example, sensitive electronics demand a much different enclosure than electric switches and relays.

Which protection type ratings apply?

Rating systems from NEMA, UL, CSA, IEC, and VDE determine an enclosure's ability to withstand environmental conditions. But these ratings all differ in important ways. Technical Information Appendix A discusses critical rating differences and provides detailed data on extensive Hoffman product testing. This information will help you determine which products, materials, paints and finishes have the best rating for your application.

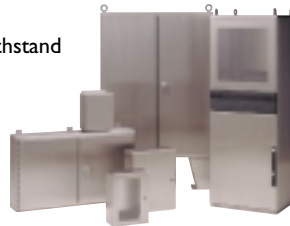
Materials

Select the appropriate material for your enclosure based on the potential environmental hazards and contaminants you need to defend against. Once you select a material, choose the enclosure that fits your application and budget.

- Hoffman steel enclosures for industrial environments are built with 10, 12, 14 or 16 gauge mild steel.



- Stainless steel (304 and 316L) enclosures withstand the toughest corrosive environments.



- Aluminum enclosures are designed to protect equipment in wet and moderately corrosive applications.



- Fiberglass enclosures suit OEMs or others who demand style as well as corrosion resistance.



- For moderate corrosion protection and impact resistance at an affordable price, polycarbonate and ABS enclosures come in a range of standard sizes.



Accessories

Customize your enclosure with a wide variety of versatile accessories.



- Rack mount accessories feature internal mounting options such as rack angles, rack panels and shelves, in addition to drawers, guides and keyboard compartments.

- Enclosure mounting accessories provide the tools you need to position your equipment, including angle adapters, casters, pedestals and swivels.

- Panels and panel accessories include DIN rails, power strips and support and swing-out kits.

- CONCEPT® Wall-Mount Enclosure accessories include DIN rails, key inserts, swing-out panels and rack mounting angles.

- For PROLINE® Enclosures, choose from several front options, such as an access cover, console compartment, keyboard shelf or writing desk.

- For applications requiring thermal management, choose from a wide array of air conditioners, heat exchangers, blowers, fans, filters, heaters and ventilators.

- General accessories include everything you need to make a standard enclosure match the specific requirements of your application. Options include door stops, drip shields, handles, latches, locks, and window kits.